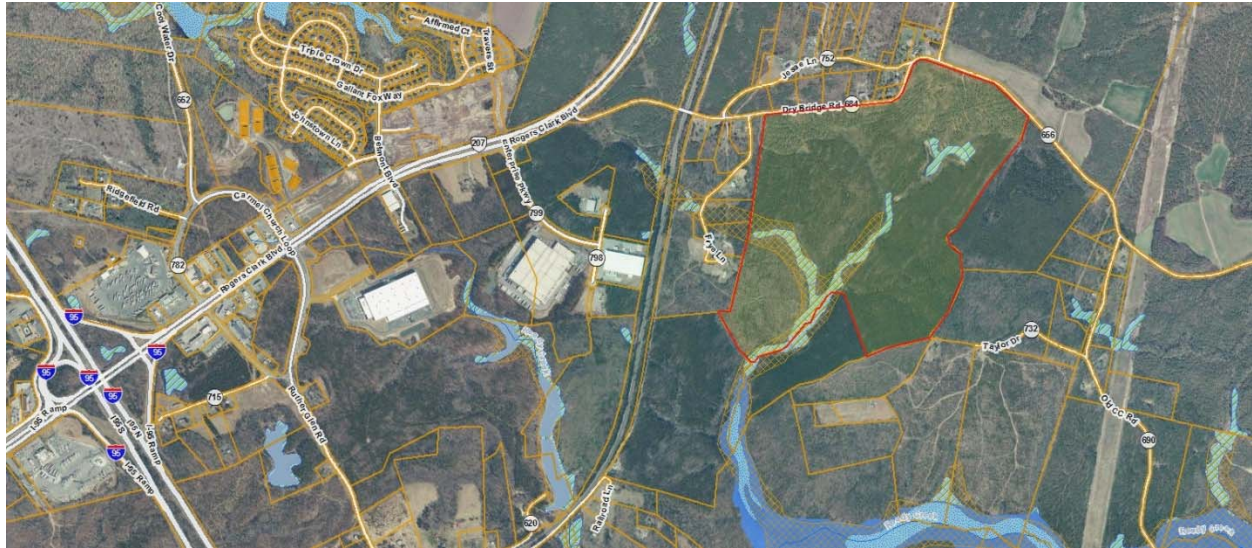




Giles Data Center Site



- 218 acres, may be subdivided, plus additional 30 acres available.
- 500,000 gallons per day of reuse water for reduced costs cooling.
- Hyper fiber redundancy including the Summit IG line that connects directly to the nation's data center hub in Northern Virginia.
- Power, all you need with new substation nearby.
- Rural but close to everything and everyone for maximum seclusion and security.
- Located outside the GSA 50 mile DC blast zone for continuity of operations and strategic safety.
- Sophisticated technology work force that wants to remain in Caroline and not commute to Northern Virginia.
- All of Caroline County is a Technology Zone: we will be aggressive in developing the best deal for your company.
- Upscale residential developments and rural alternative living styles.
- Carmel Church Station, an urban core in the planning stage with commuter rail to DC and Amtrak to everywhere: www.washingtondcsouth.com.

Gwilson@co.caroline.va.us 804.633.4074
Gary R. Wilson, Director of Economic Development