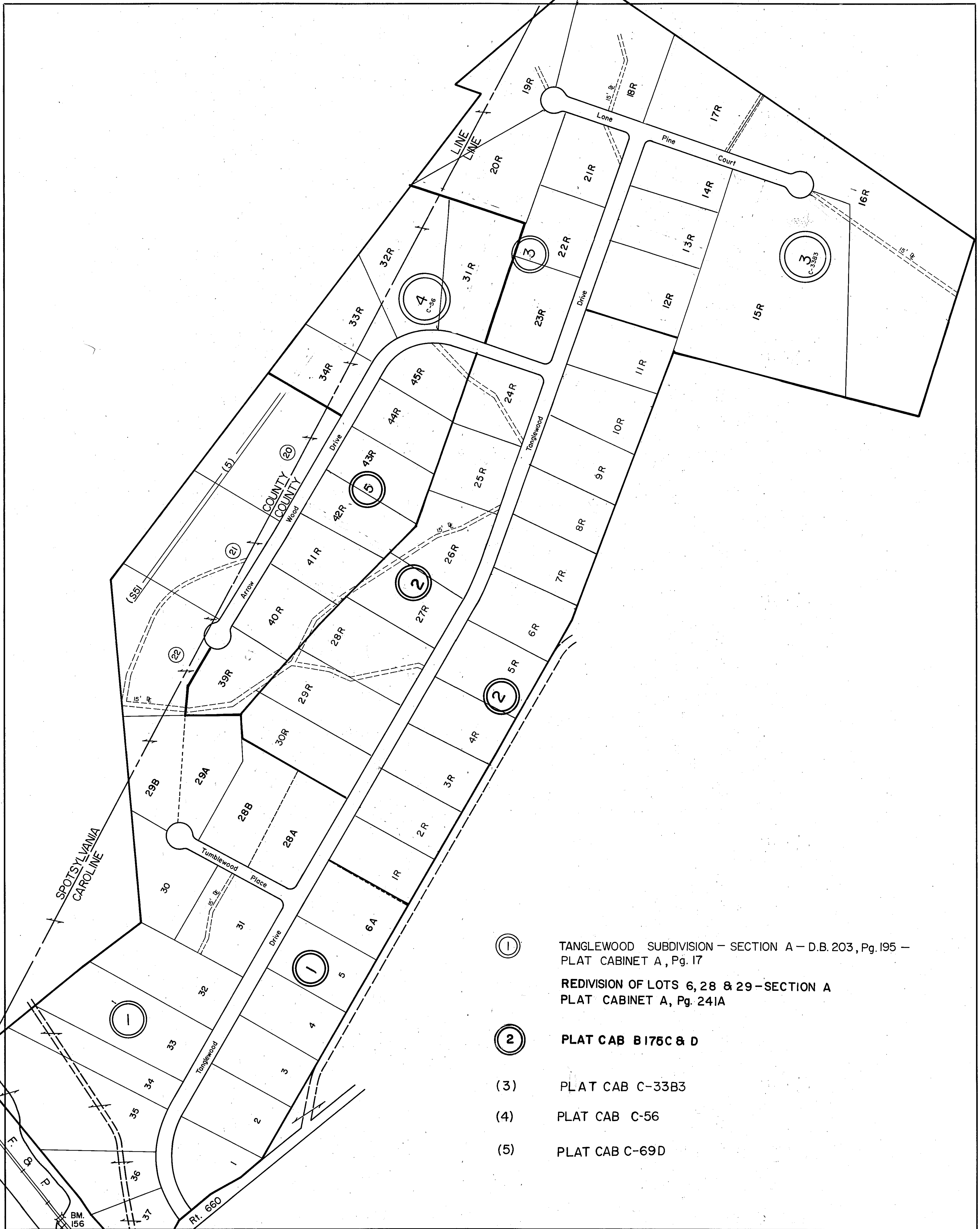
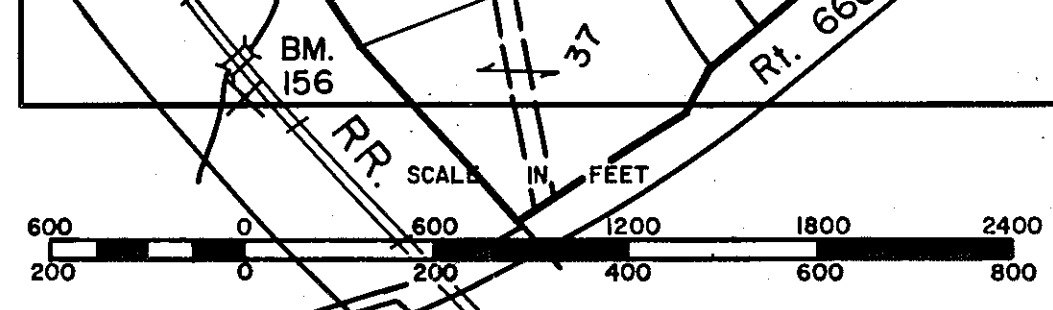


CAROLINE COUNTY



- ① TANGLEWOOD SUBDIVISION - SECTION A - D.B. 203, Pg. 195 - PLAT CABINET A, Pg. 17
- ② REDIVISION OF LOTS 6, 28 & 29 - SECTION A PLAT CABINET A, Pg. 241A
- ③ PLAT CAB B175C & D
- ④ PLAT CAB C-33B3
- ⑤ PLAT CAB C-56
- ⑥ PLAT CAB C-69D



PORT ROYAL DISTRICT

SECTION 16A
INSERT