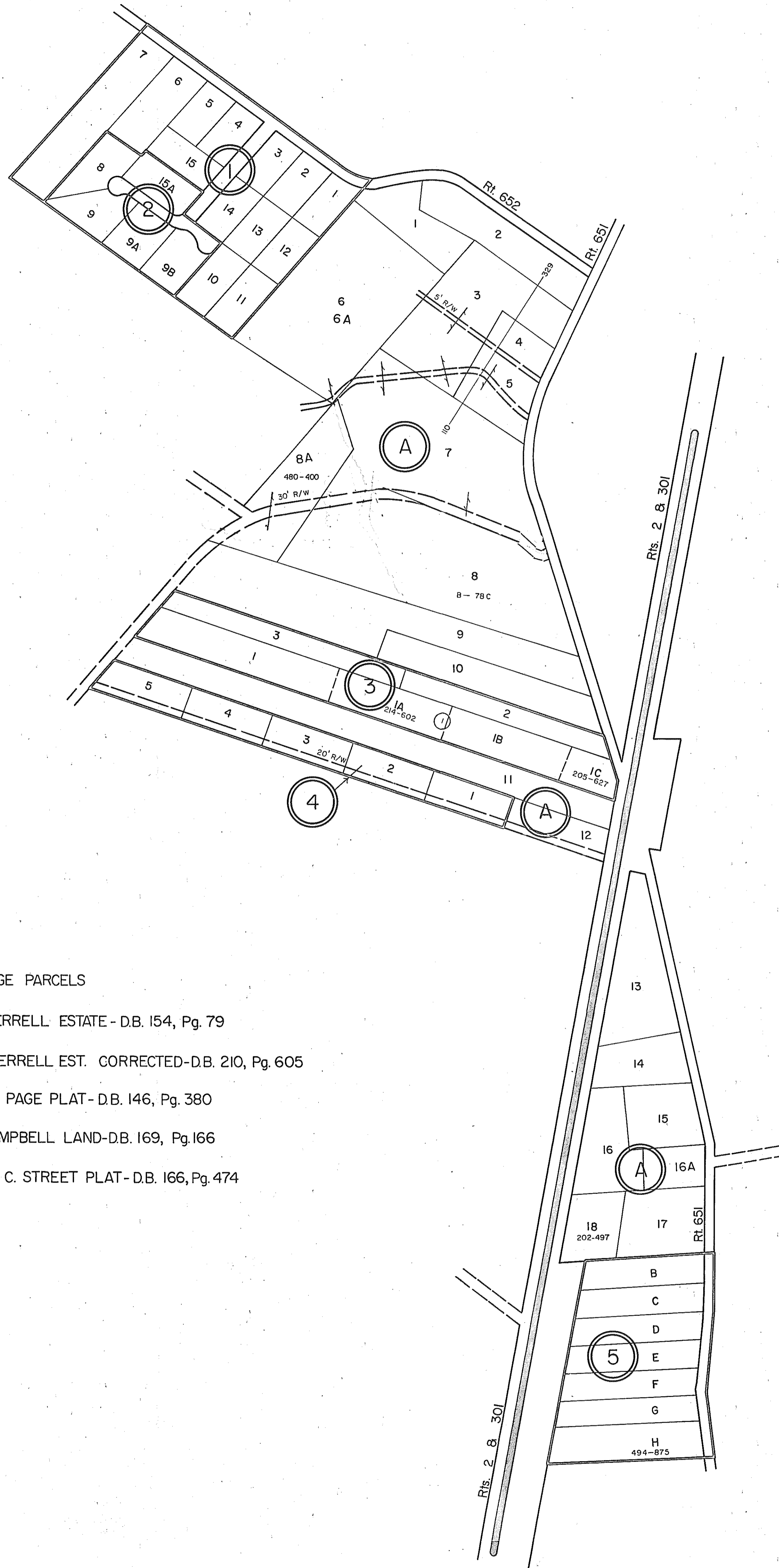
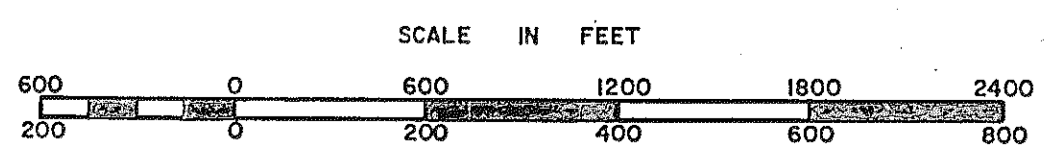


CAROLINE COUNTY



- (A) ACREAGE PARCELS
- (1) W. L. TERRELL ESTATE - D.B. 154, Pg. 79
- (2) W. L. TERRELL EST. CORRECTED-D.B. 210, Pg. 605
- (3) WILLIE PAGE PLAT - D.B. 146, Pg. 380
- (4) P.T. CAMPBELL LAND-D.B. 169, Pg. 166
- (5) JAMES C. STREET PLAT - D.B. 166, Pg. 474



REEDY CHURCH DISTRICT

PREPARED BY VIRGINIA STATE DEPARTMENT OF TAXATION, DIVISION OF REAL ESTATE APPRAISAL AND MAPPING

REVISED: 94 96 97 98

SECTION _____
 INSERT 108A