

LIST OF FIGURES

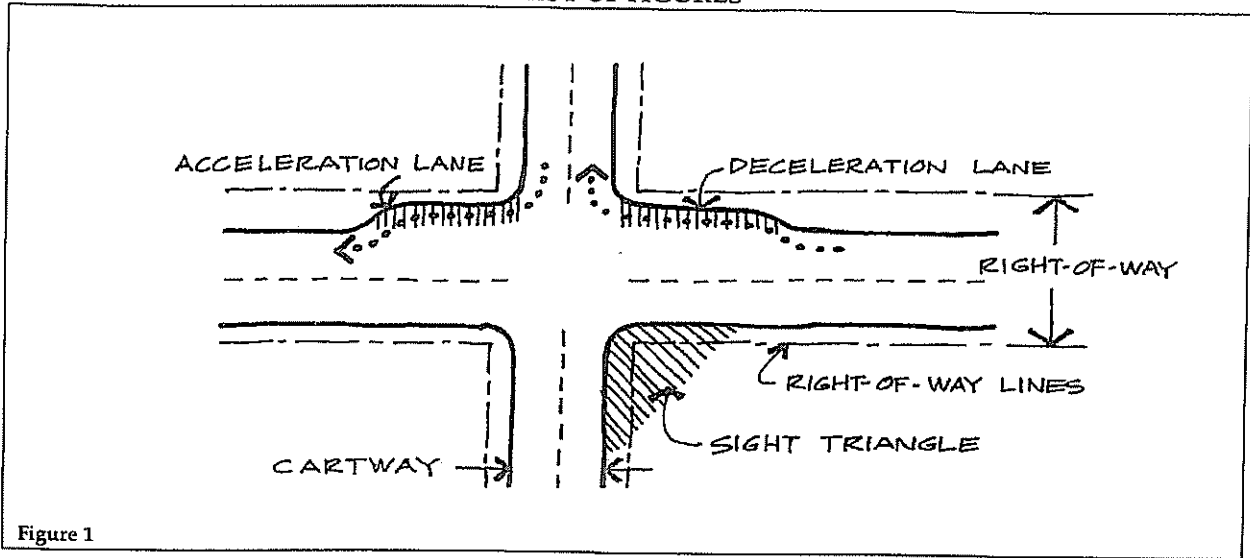


Figure 1

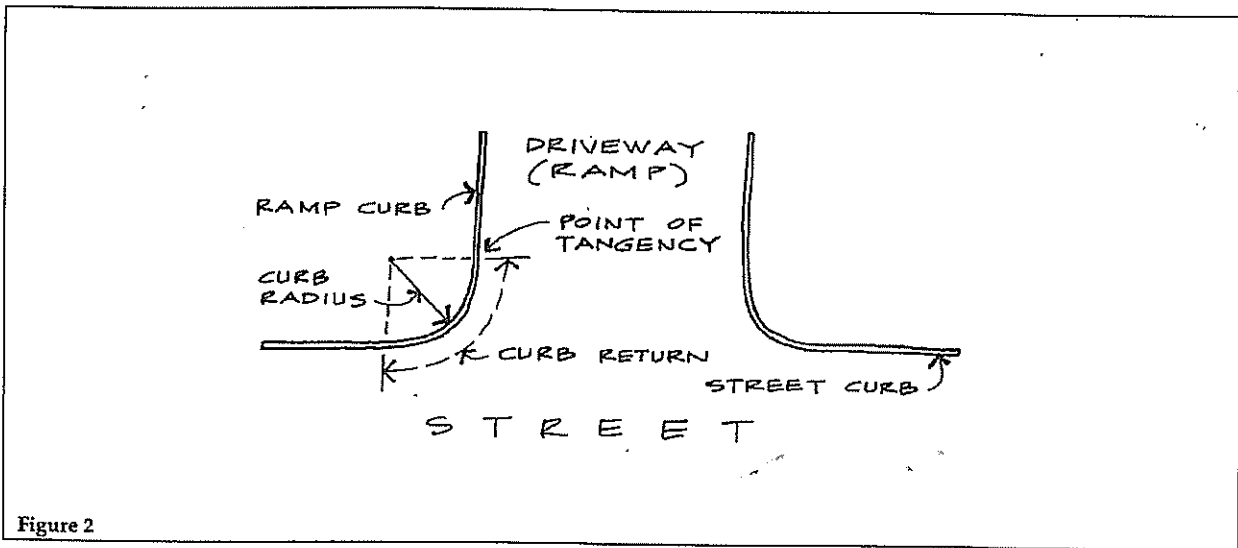


Figure 2

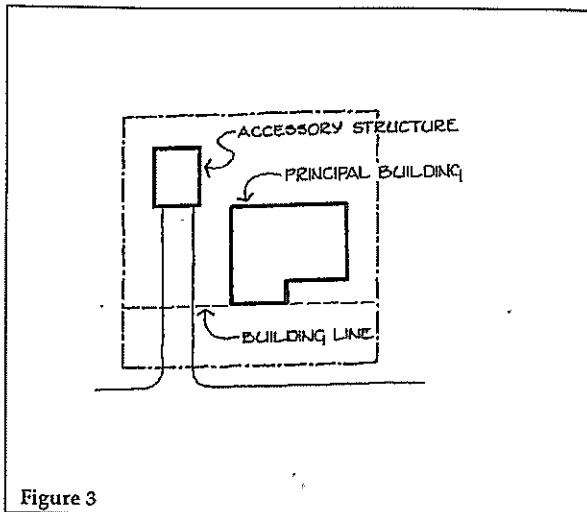


Figure 3

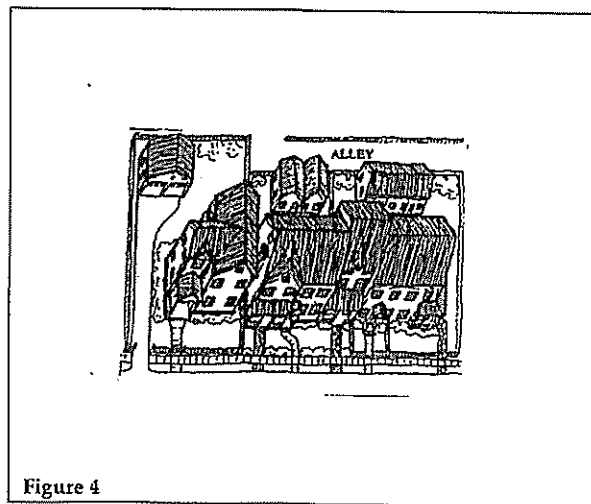


Figure 4

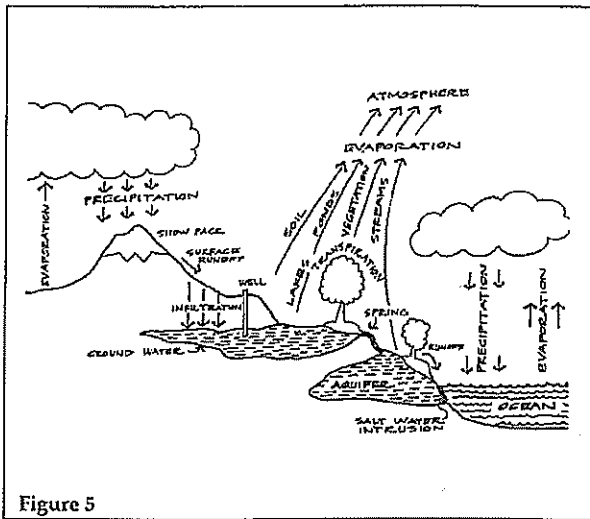


Figure 5

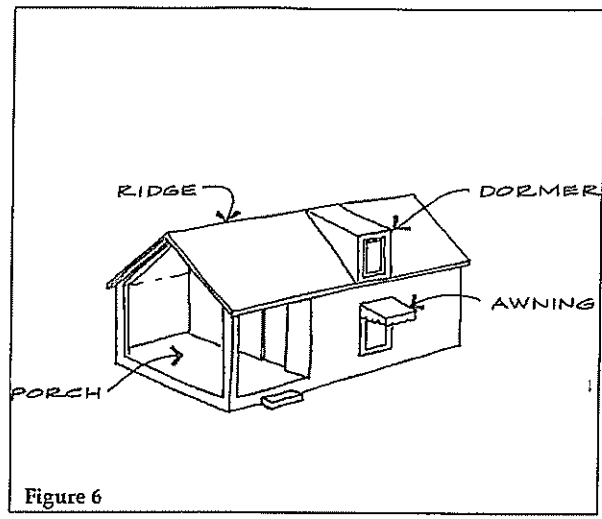


Figure 6

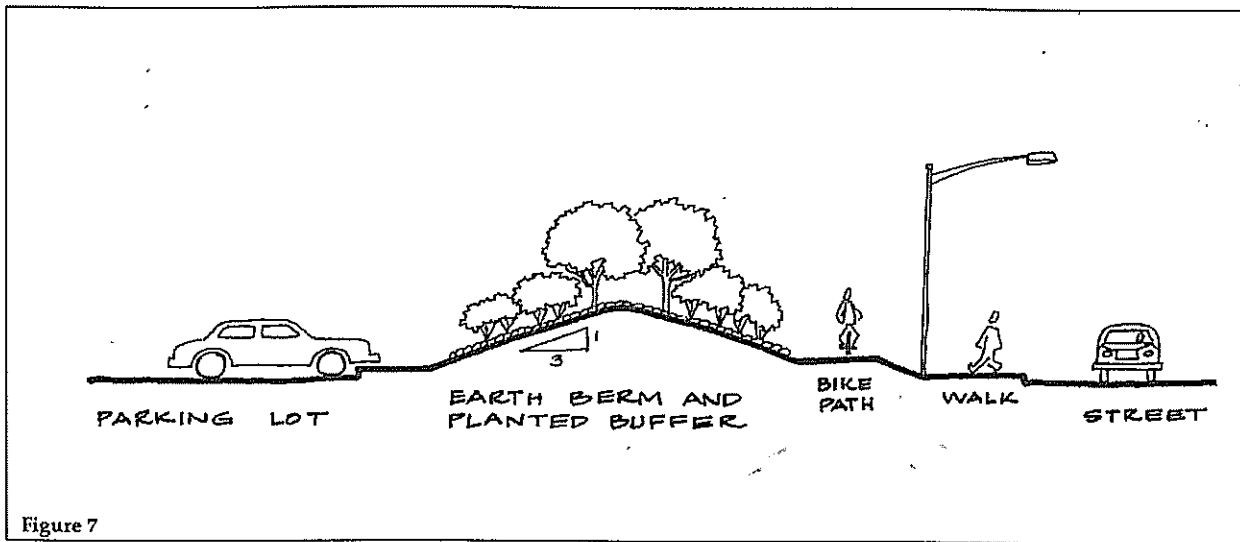


Figure 7

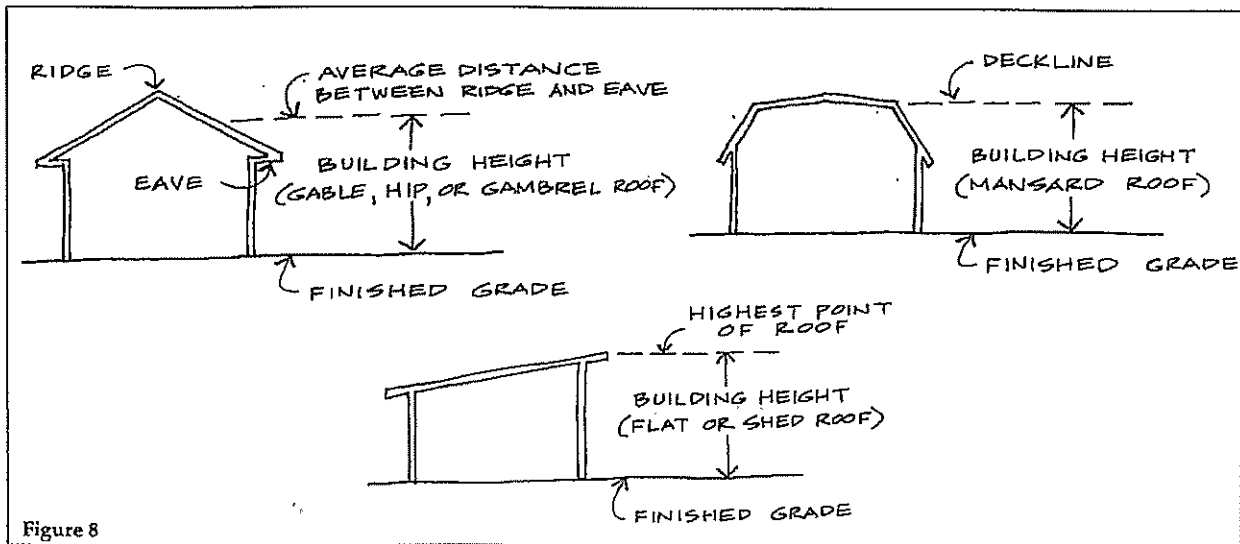


Figure 8

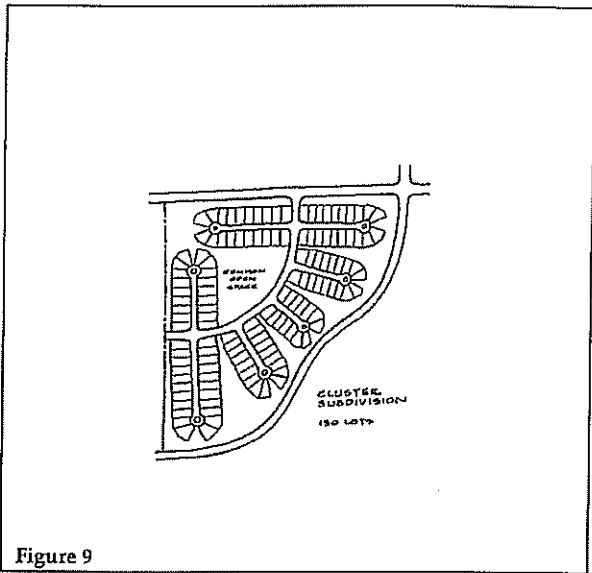


Figure 9

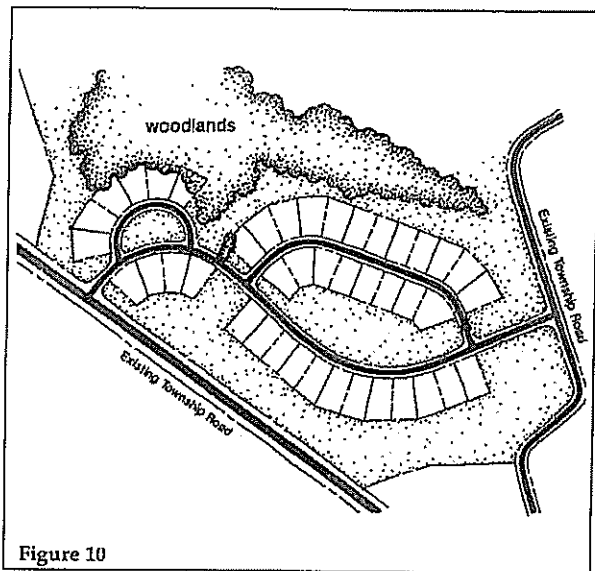


Figure 10

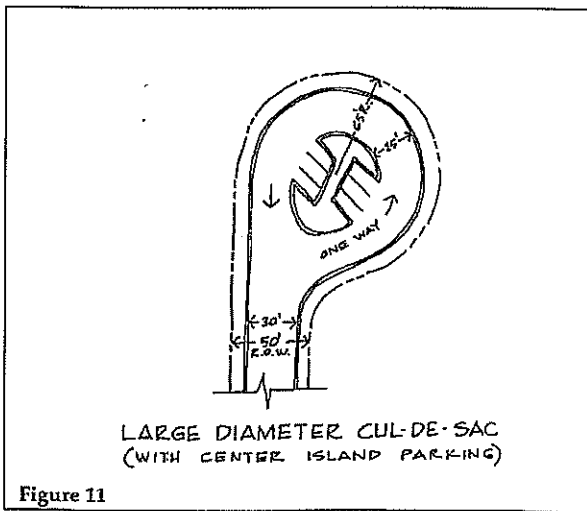


Figure 11

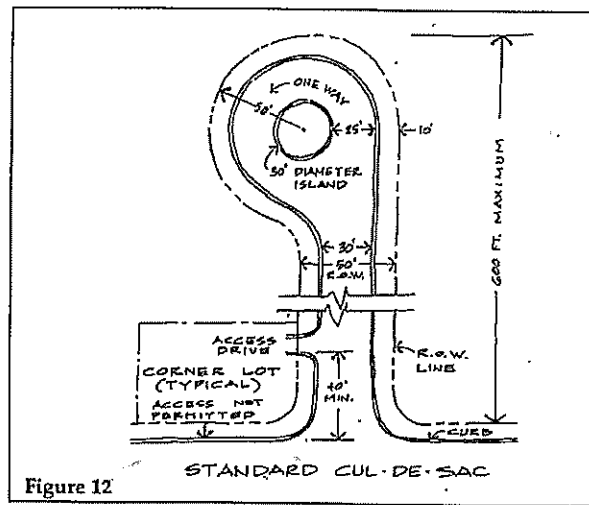


Figure 12

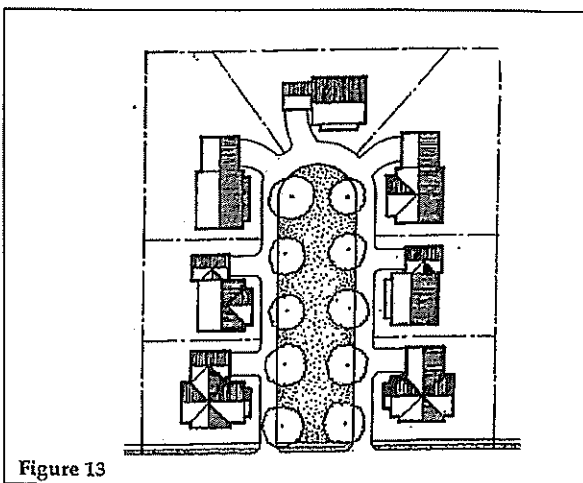


Figure 13

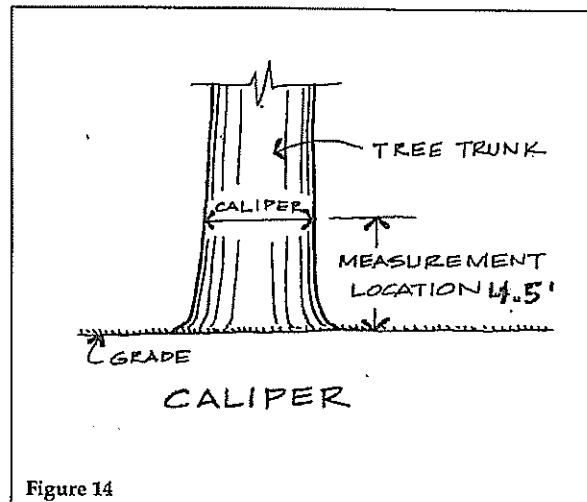
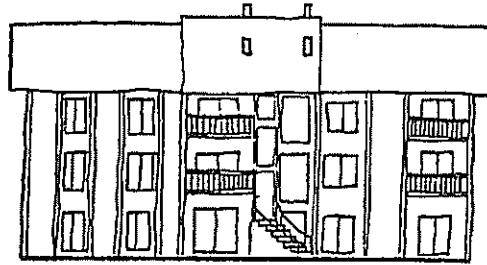
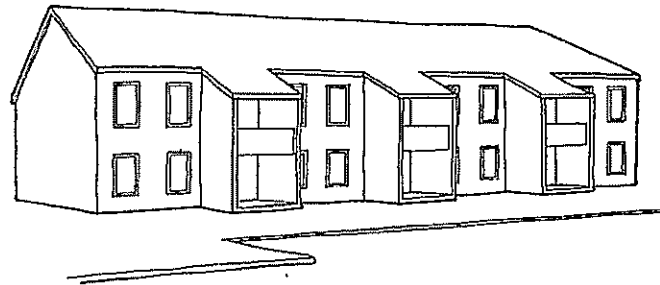


Figure 14



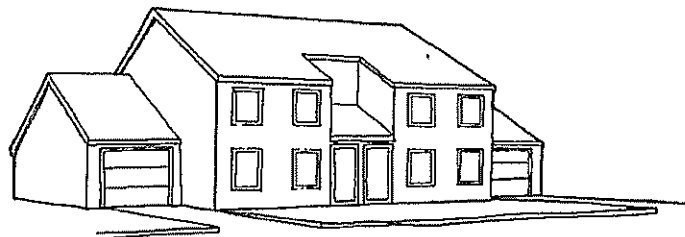
MULTIFAMILY DWELLING

Figure 15



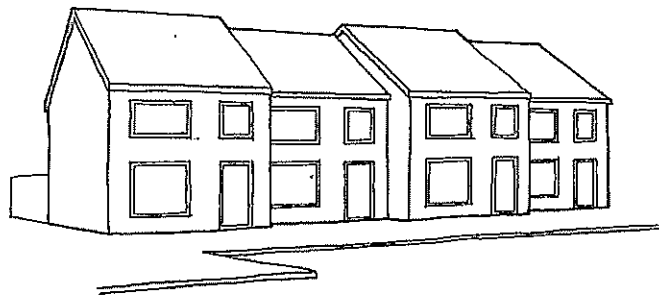
GARDEN APARTMENT

Figure 16



DWELLING, SEMIDETACHED

Figure 17



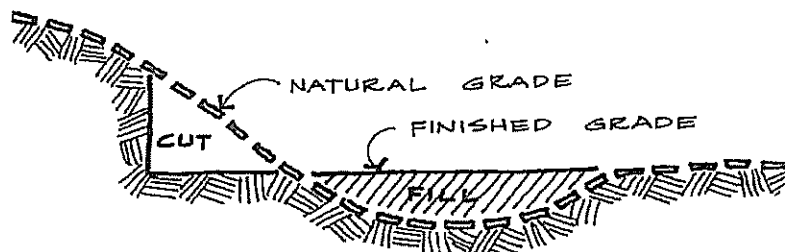
DWELLING, TOWNHOUSE

Figure 18



DWELLING, SINGLE-FAMILY DETACHED

Figure 19



CUT AND FILL CROSS SECTION

Figure 20

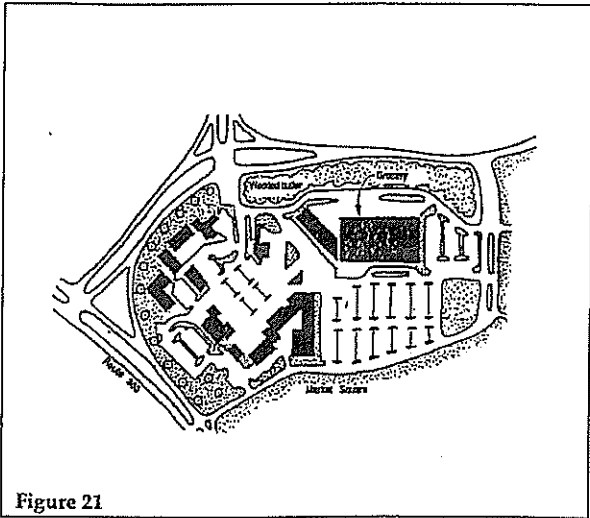


Figure 21

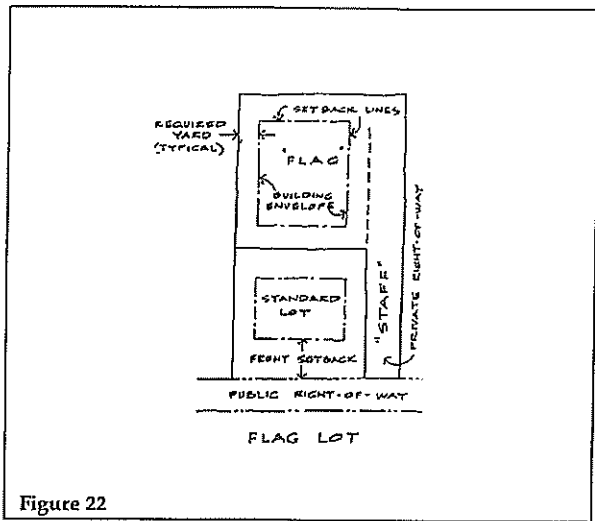


Figure 22

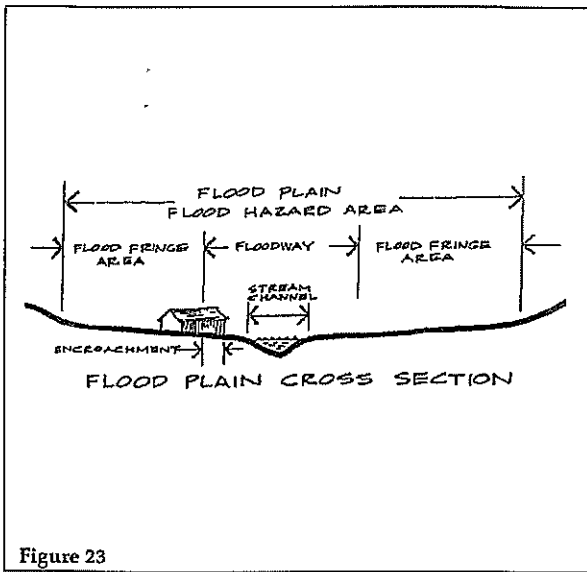


Figure 23

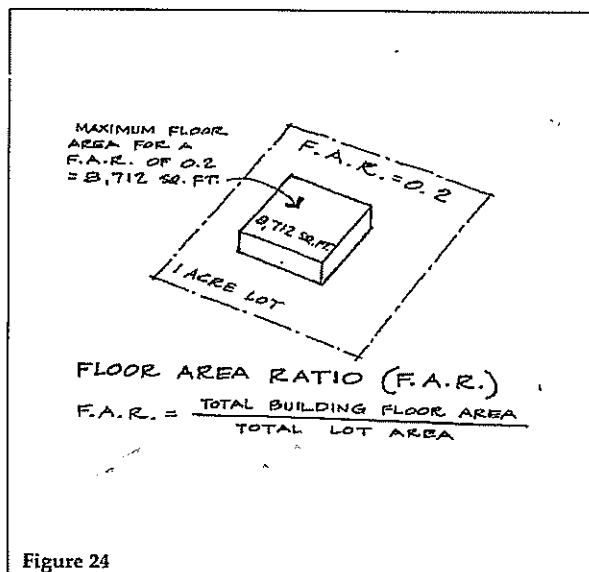


Figure 24

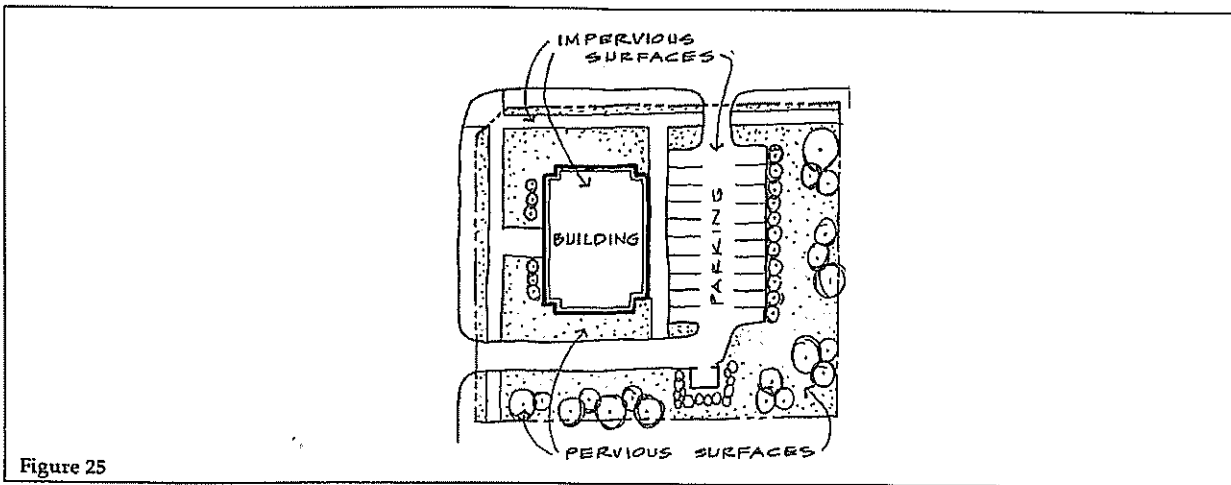


Figure 25

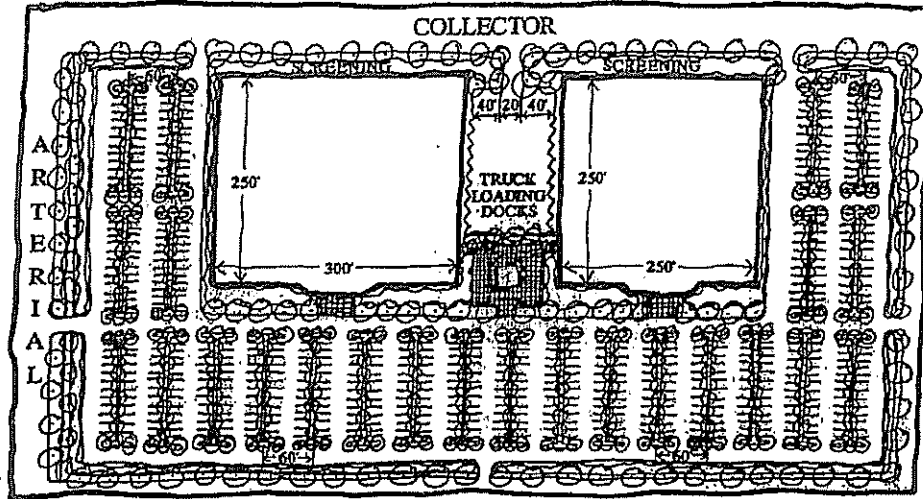


Figure 26

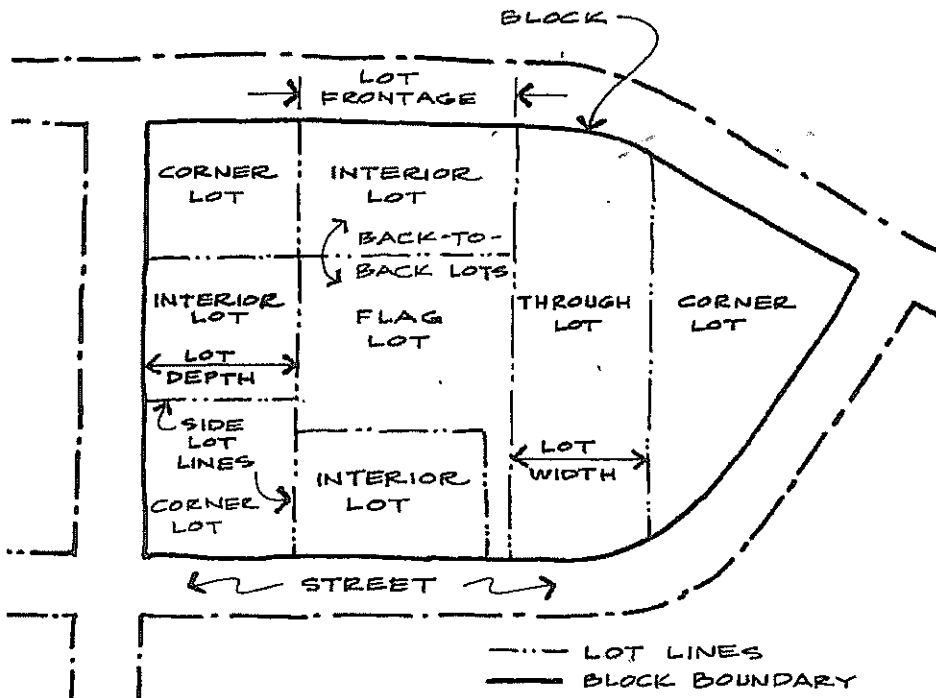


Figure 27

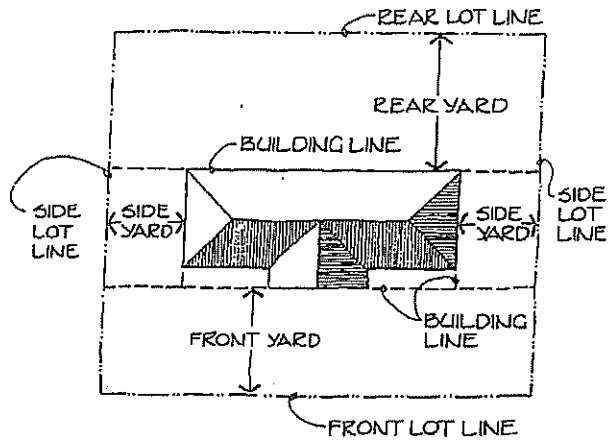


Figure 28

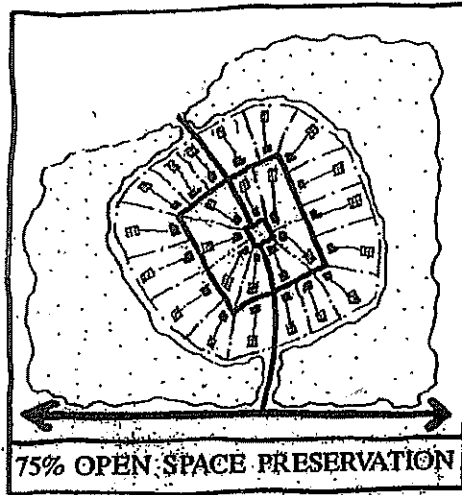


Figure 29

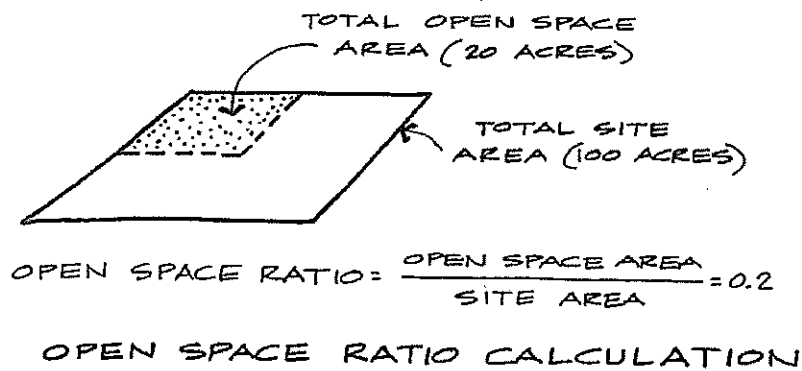


Figure 30

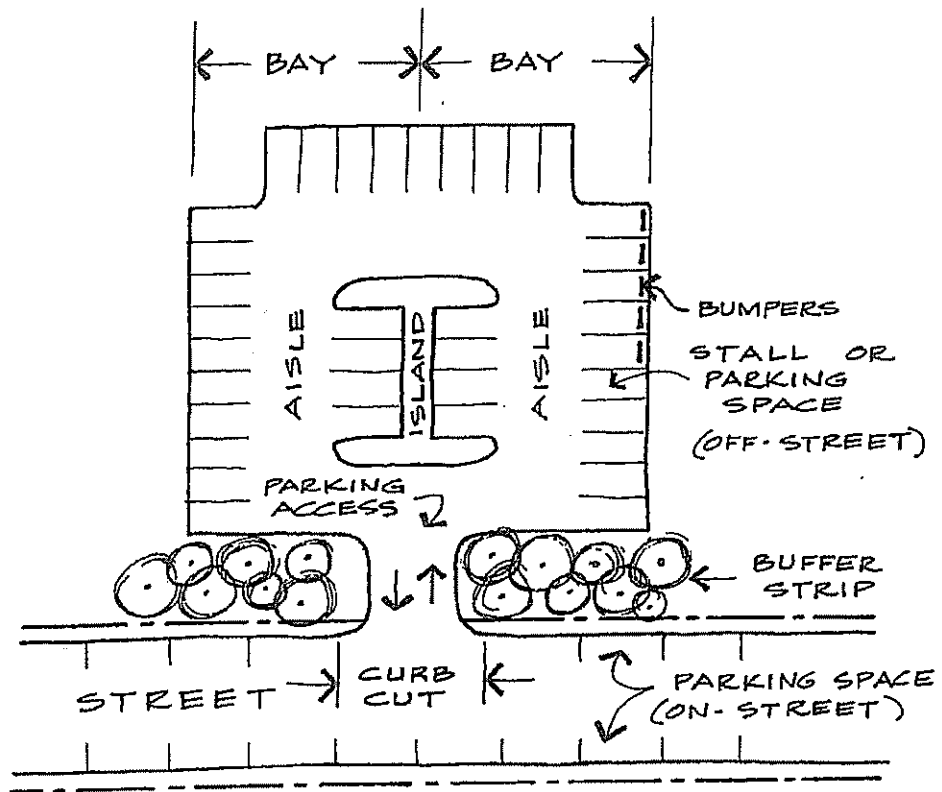


Figure 31

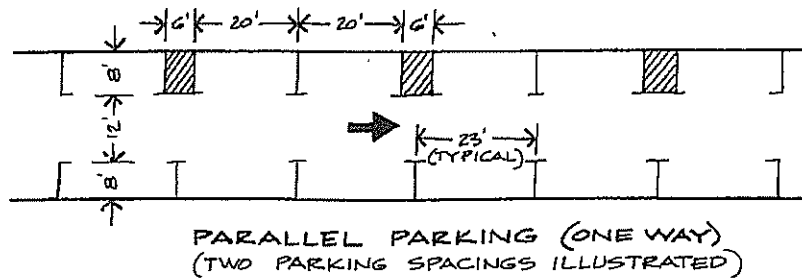


Figure 32

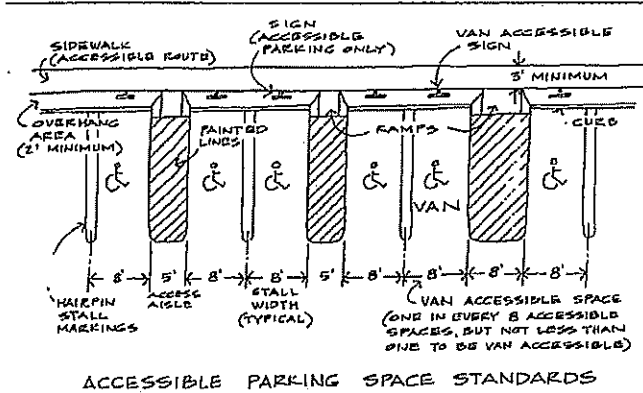


Figure 33

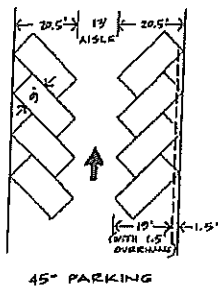


Figure 34

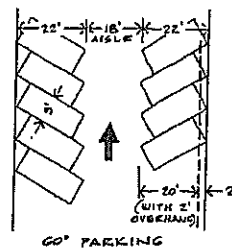


Figure 35

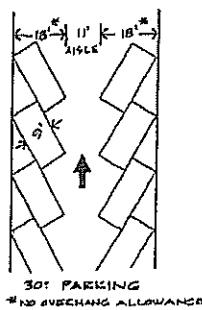


Figure 36

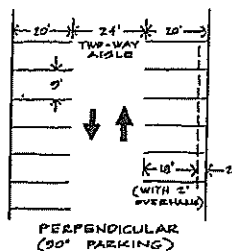


Figure 37

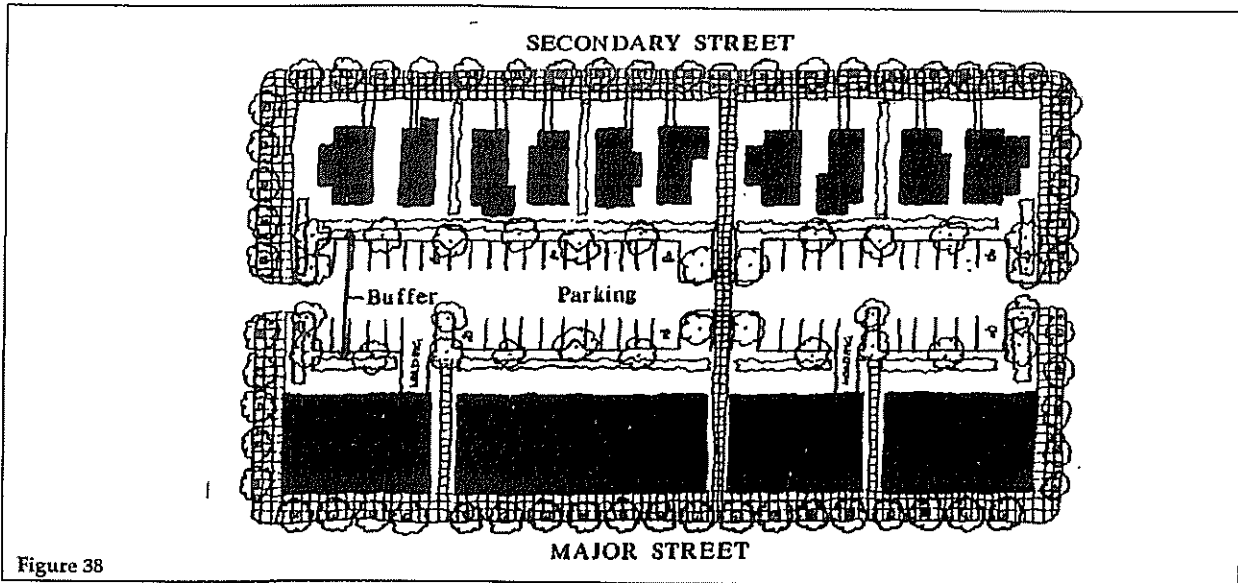


Figure 38

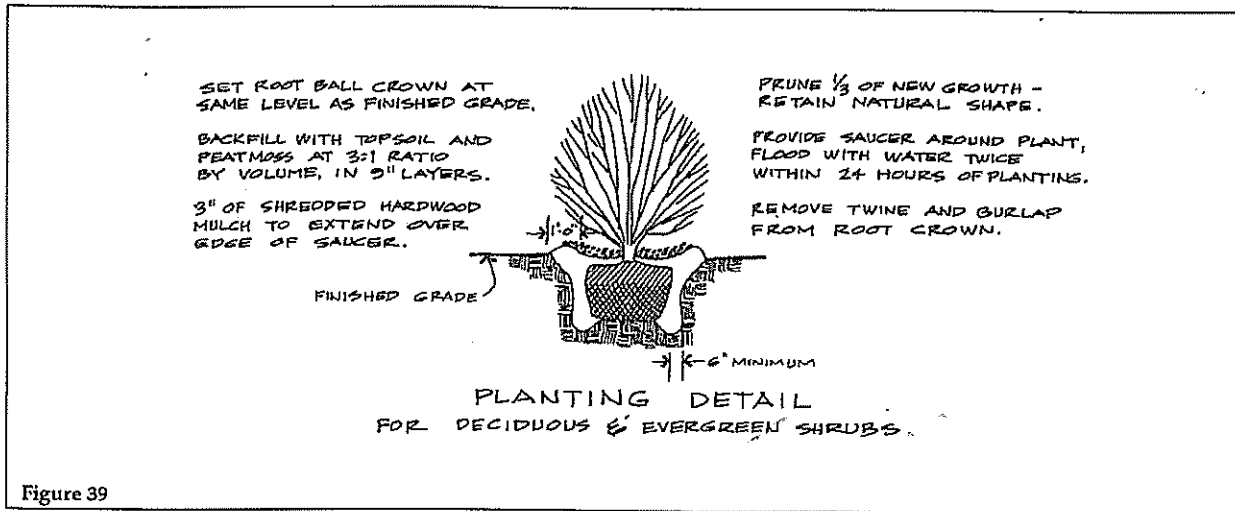


Figure 39

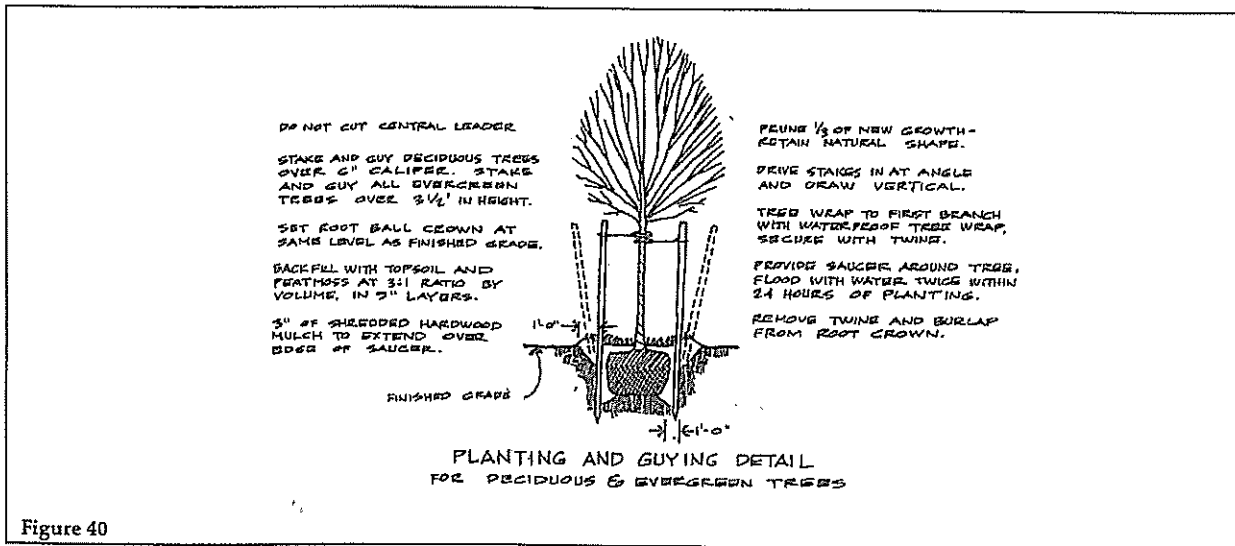


Figure 40

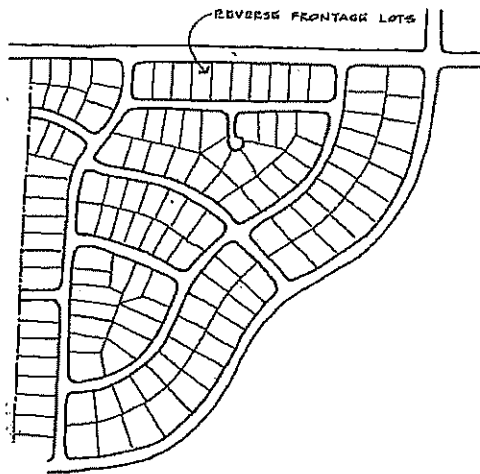


Figure 41

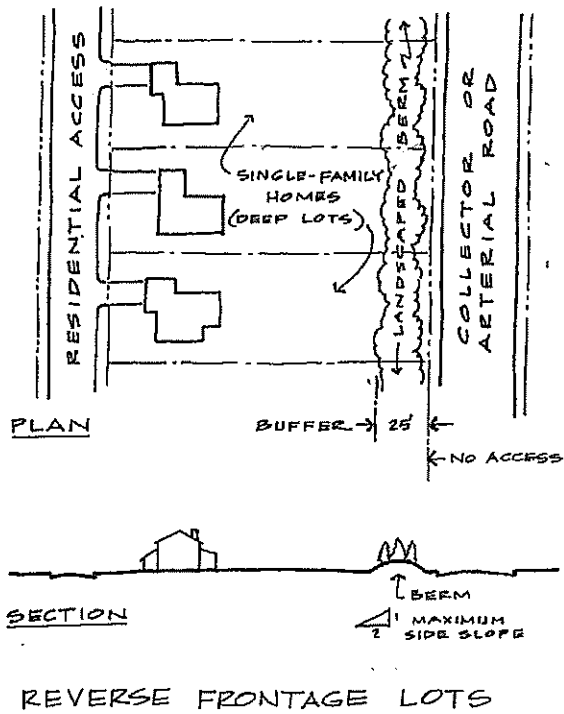


Figure 42

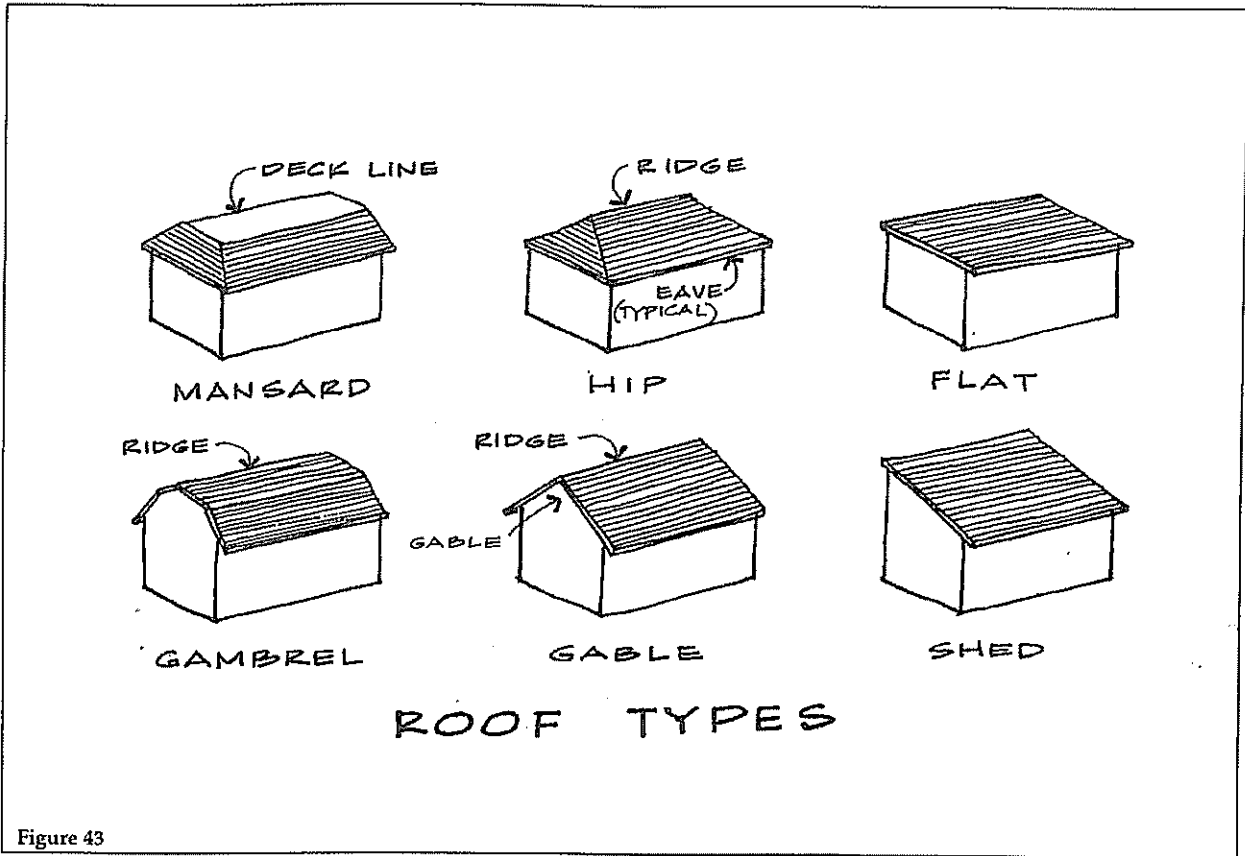


Figure 43

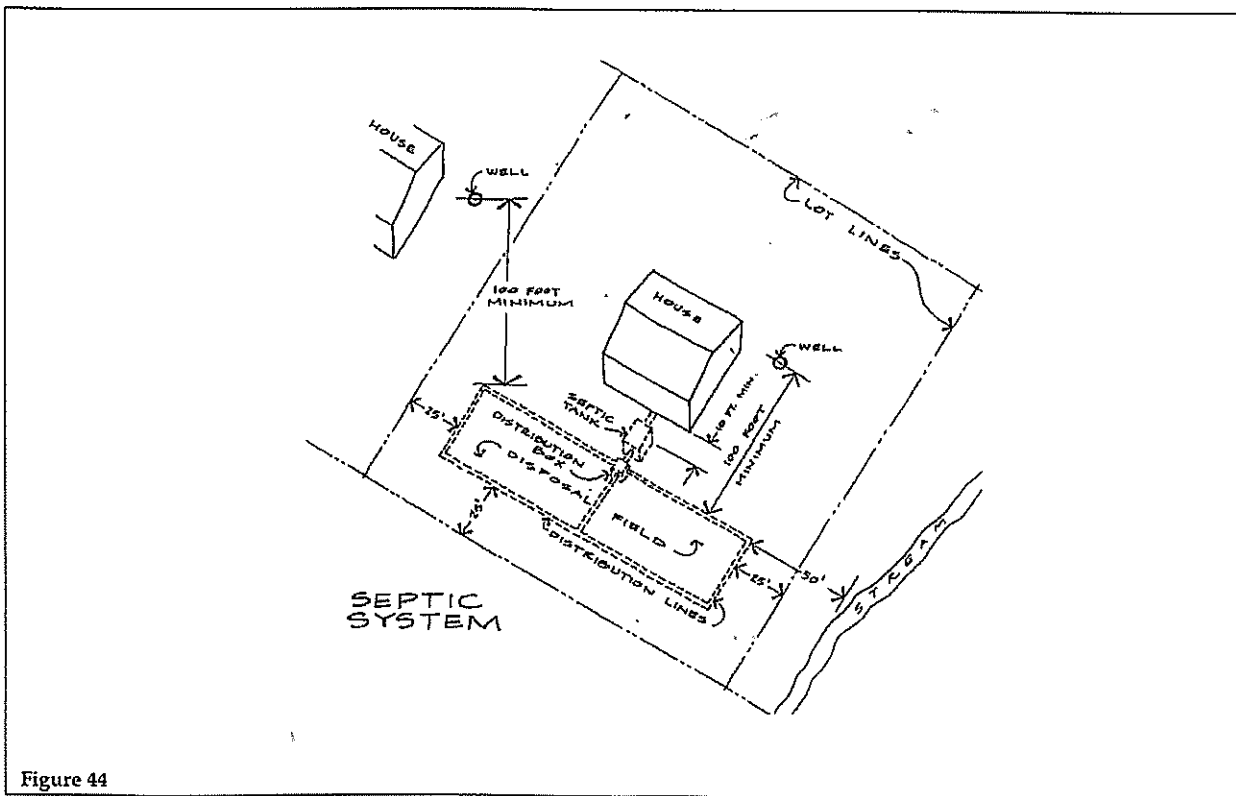
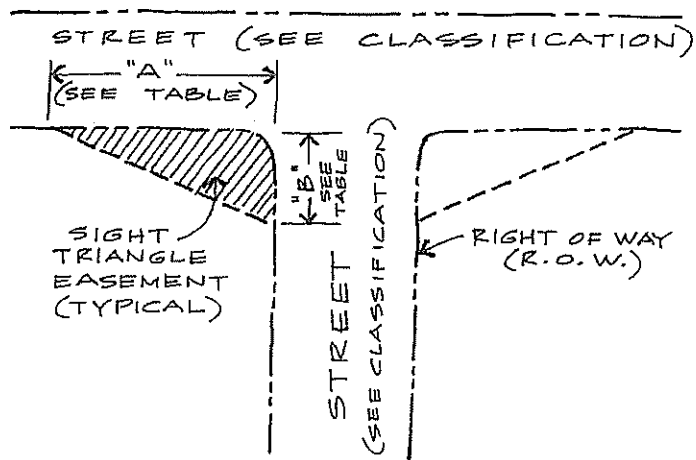


Figure 44



REQUIREMENT BY STREET CLASSIFICATION (MEASURED ALONG R.O.W.)

"B" (DISTANCE IN FEET)

"A" (DISTANCE IN FEET)

		LOCAL STREET	COLLECTOR STREET	ARTERIAL STREET
30	LOCAL STREET	30	100	130-150
100	COLLECTOR STREET	30	100	130-150
130-150	ARTERIAL STREET	30	100	130-150

SIGHT TRIANGLE

Figure 45

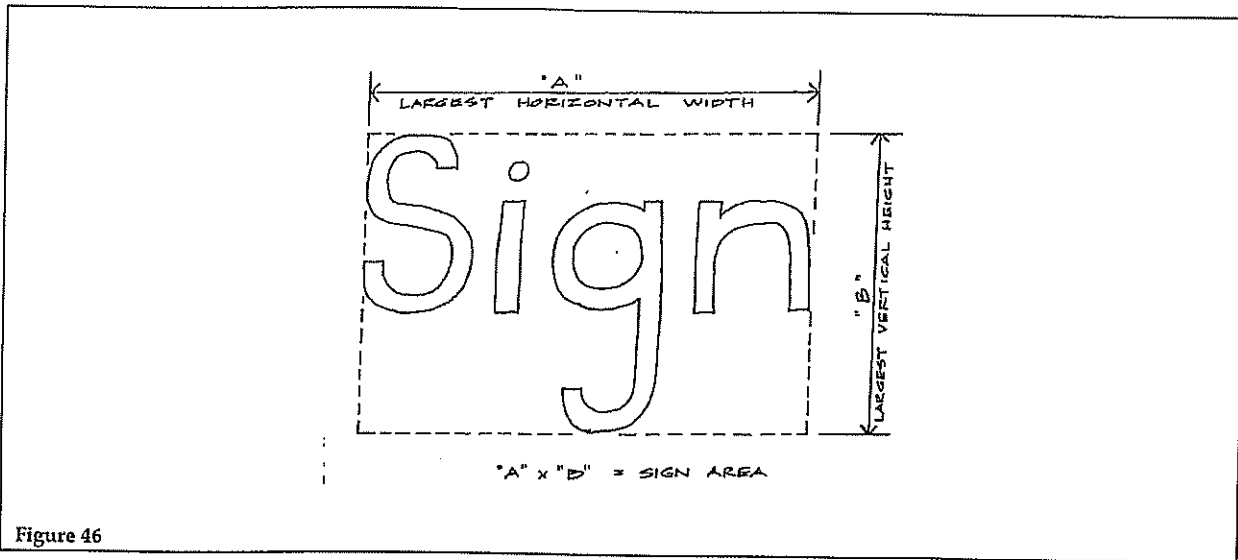


Figure 46

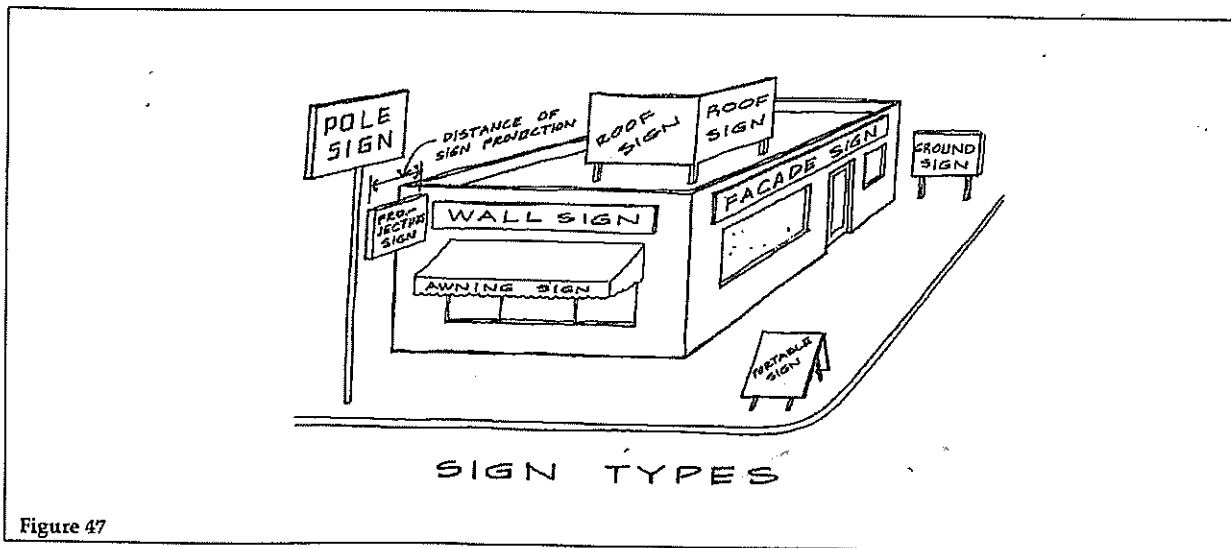


Figure 47

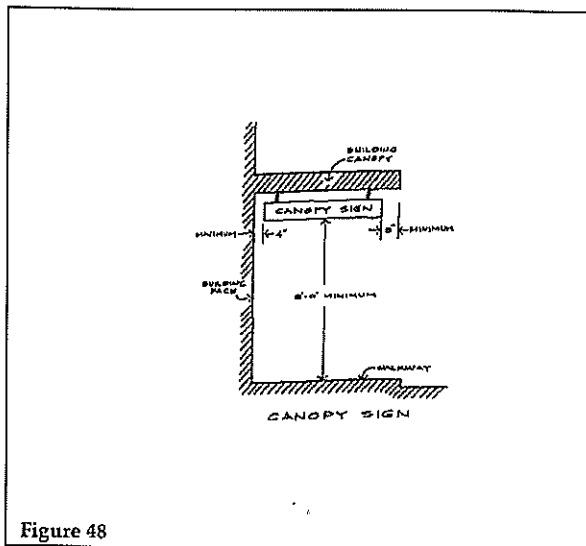


Figure 48

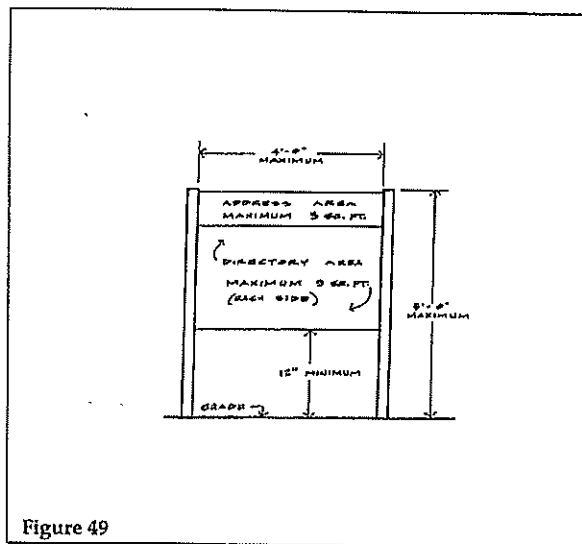


Figure 49

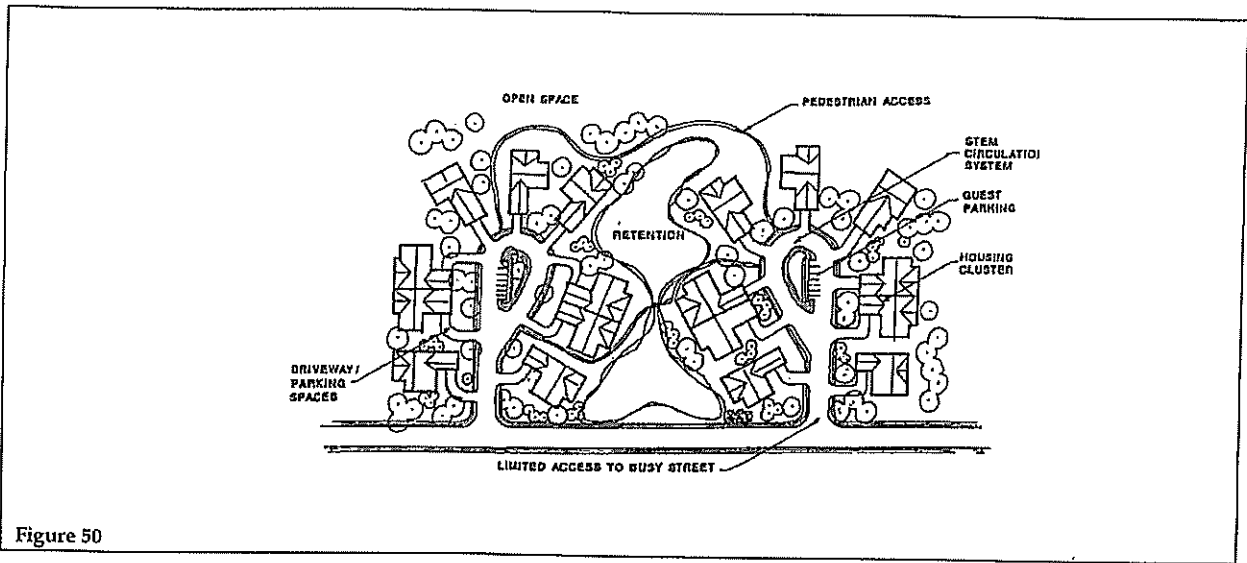


Figure 50

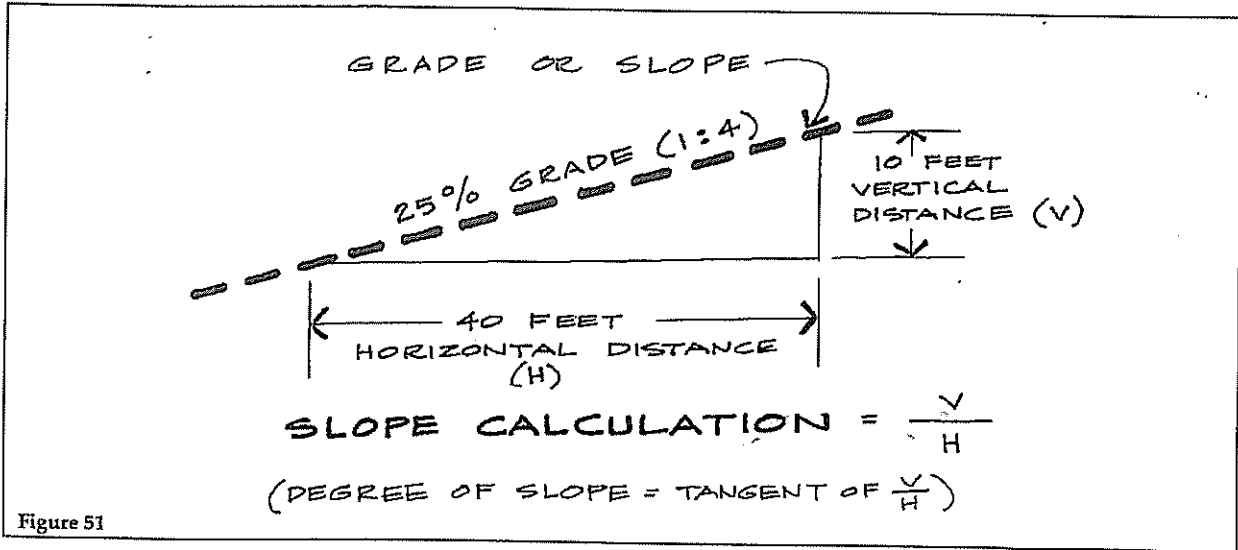


Figure 51

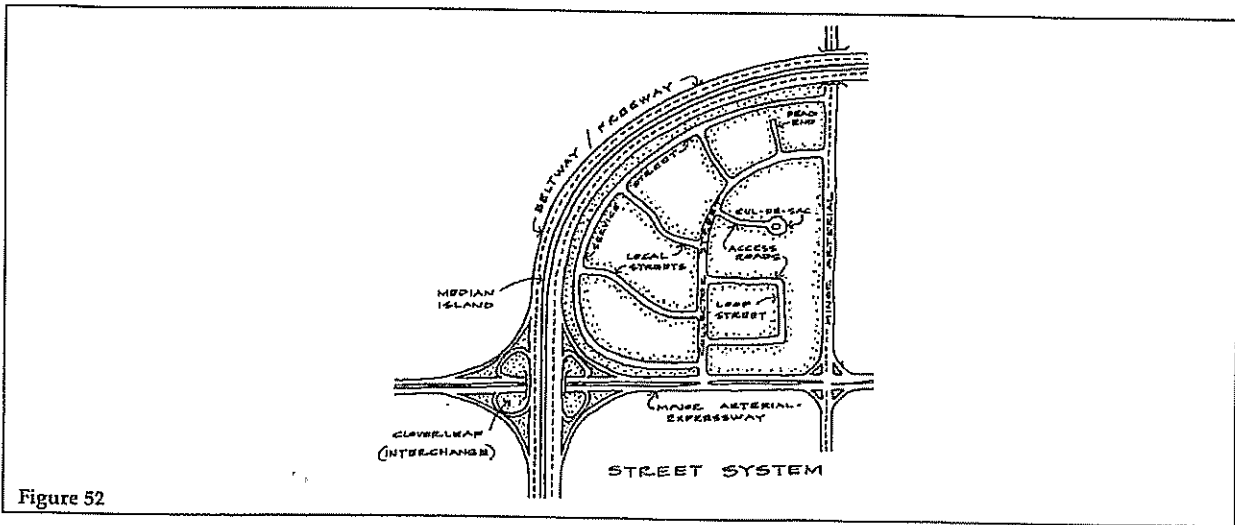


Figure 52

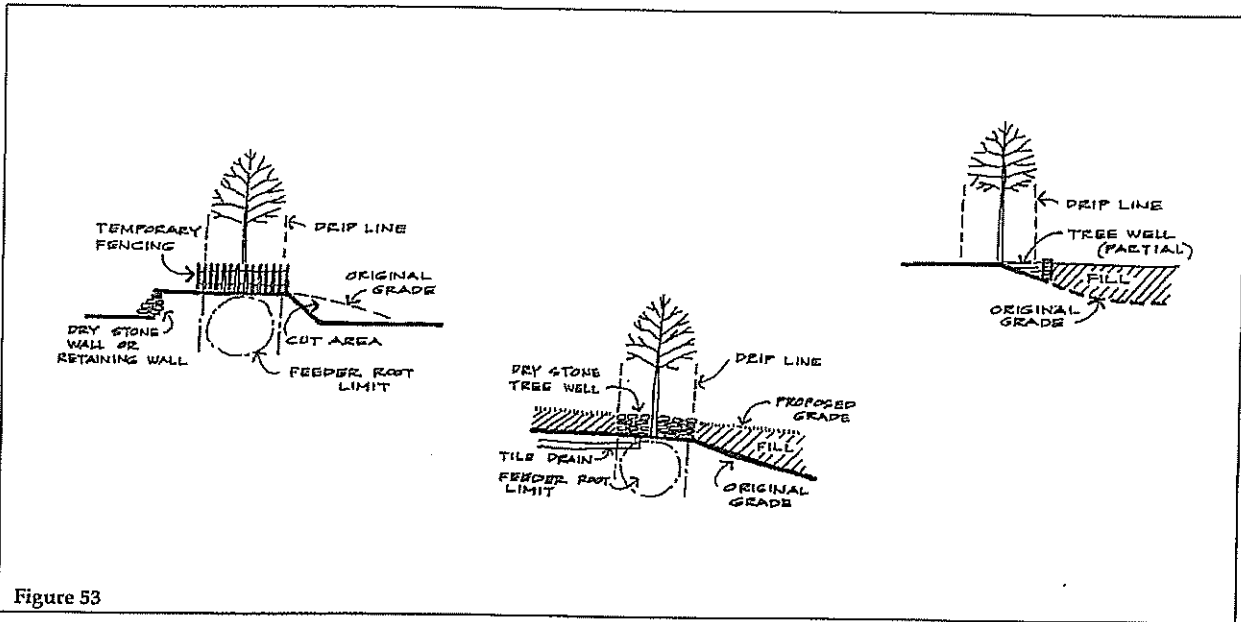


Figure 53

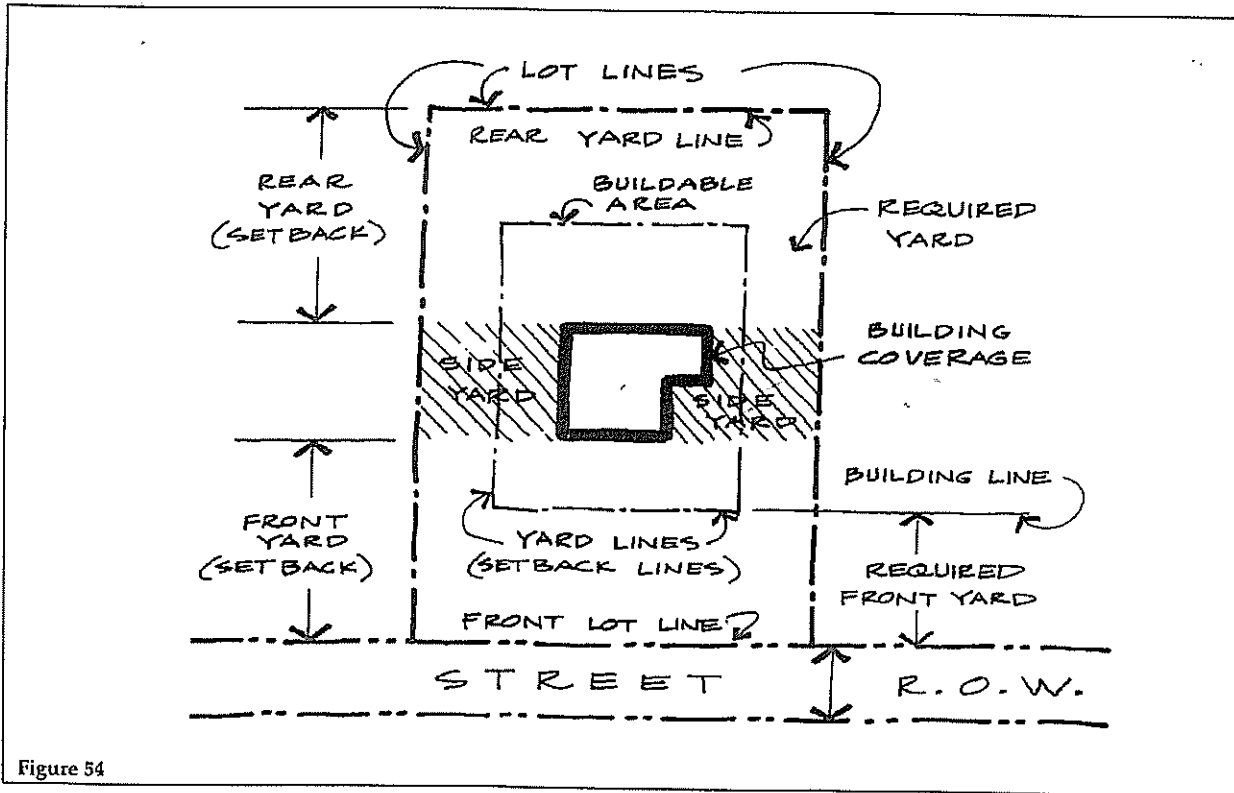
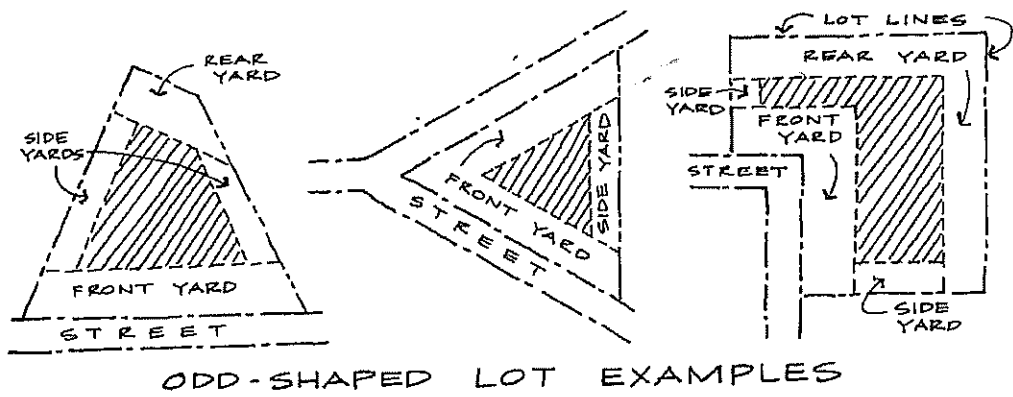
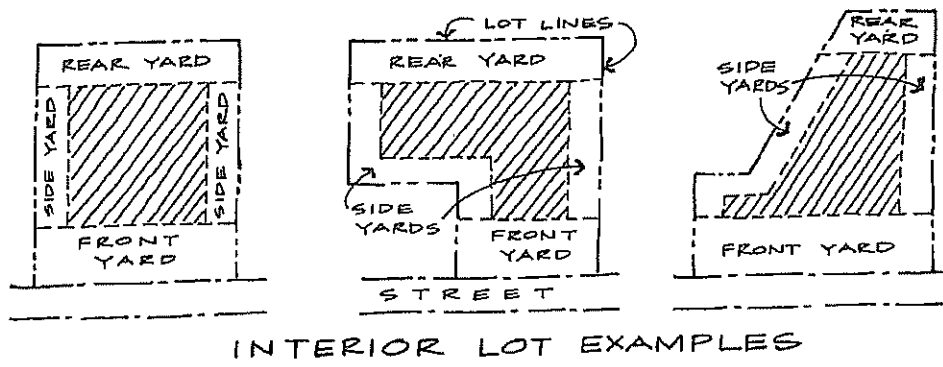
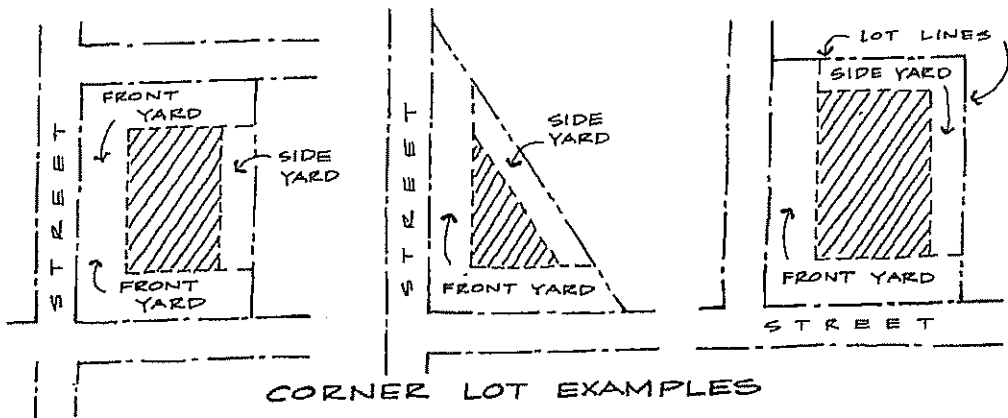


Figure 54




REQUIRED YARDS
 BUILDING (ZONING) ENVELOPE

Figure 55

SINGLE TWO-WAY ENTRANCE WITH RIGHT TURN LANE AND TAPER

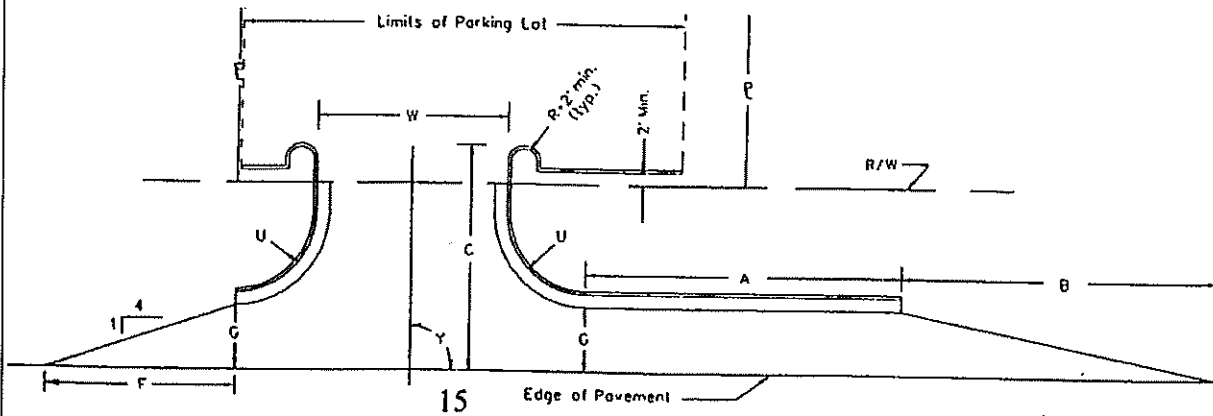


Figure 56

SINGLE TWO-WAY ENTRANCE

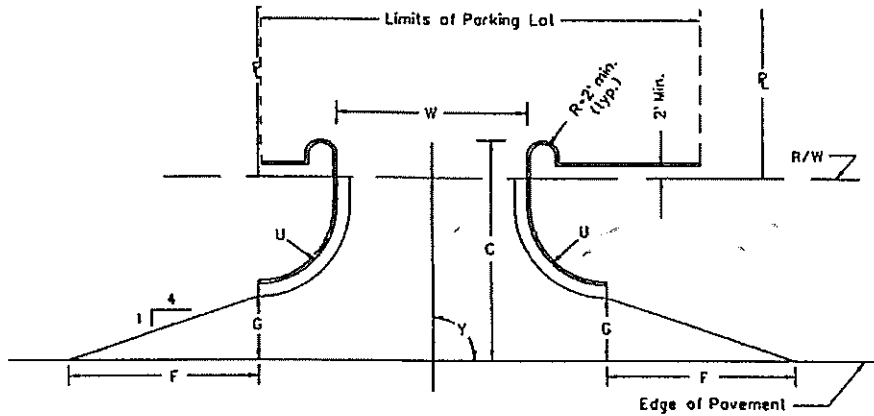


Figure 57

LETTER SYMBOL	DIMENSIONS
A	As determined by the Engineer
B	100' or greater.
C	25' or greater, in developing areas where it is anticipated that the right turn lane will become a continuous thru lane in the future, an additional 12' is recommended.
F	40' or greater.
G	12'
U	12.5' - 50'. The radii selected should accommodate the anticipated type of vehicle usage. Larger radii should be considered by the designer or may be required by the Engineer if larger vehicles are anticipated; however, in no case shall radii be less than 12.5'.
W	30' - 40'
Y	60° - 90°