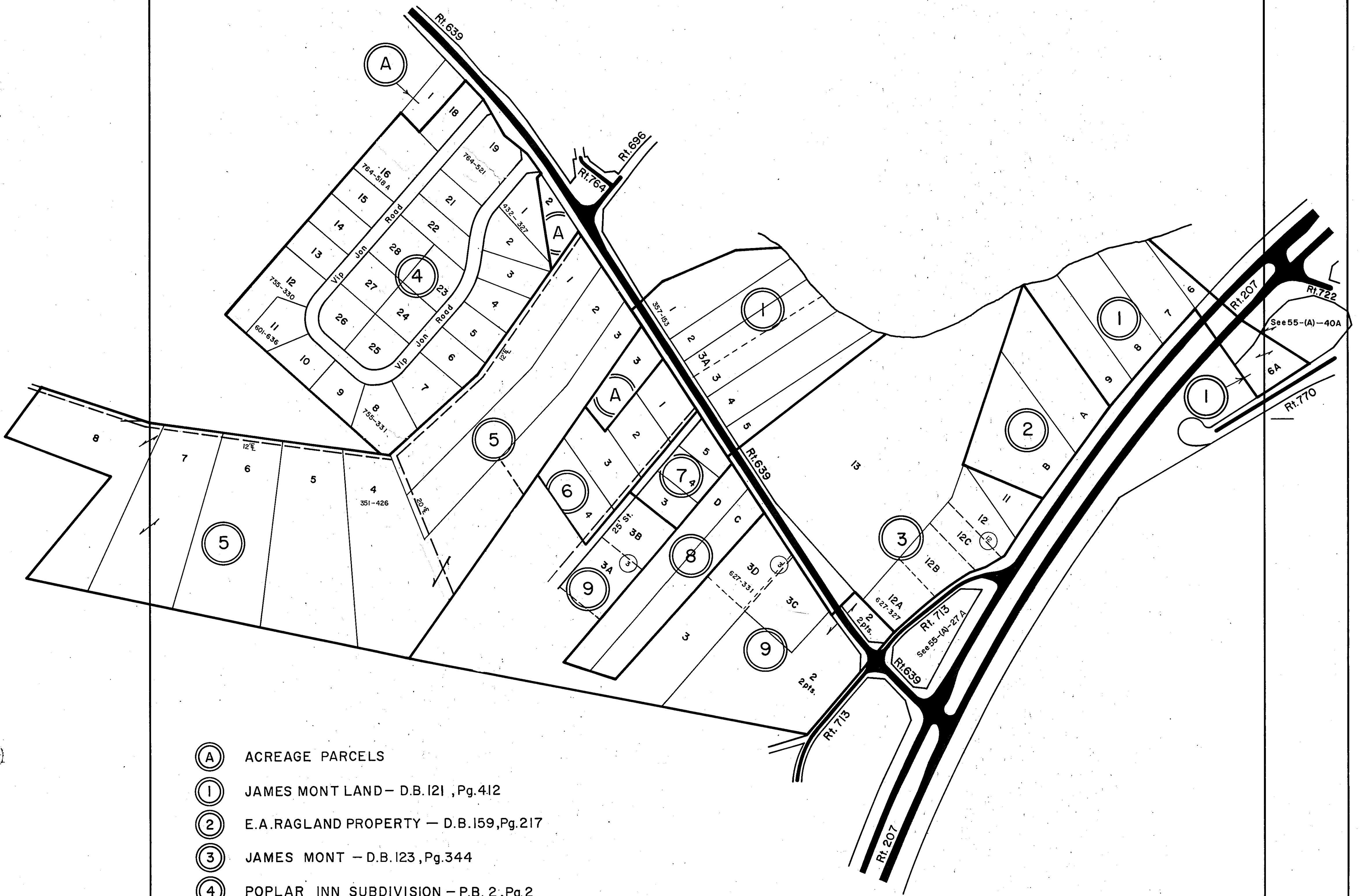
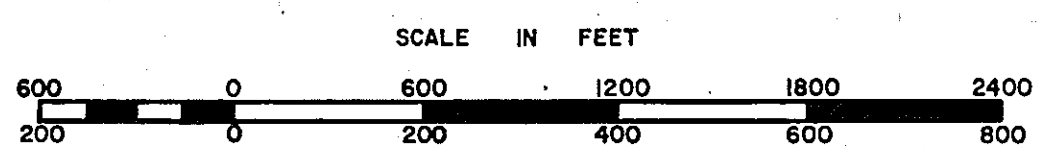


CAROLINE COUNTY



- Ⓐ ACREAGE PARCELS
- ① JAMES MONT LAND - D.B. 121, Pg. 412
- ② E.A. RAGLAND PROPERTY - D.B. 159, Pg. 217
- ③ JAMES MONT - D.B. 123, Pg. 344
- ④ POPLAR INN SUBDIVISION - P.B. 2, Pg. 2
- ⑤ ALLEN MINOR EST. - D.B. , Pg. 15, 15A
- ⑥ JAMES H. MONT LAND - D.B. 150, Pg. 44
- ⑦ JAMES H. MONT PLAT - D.B. 157, Pg. 463
- ⑧ JAMES MONT Jr. PROPERTY - D.B. 151, Pg. 213
- ⑨ J. H. MONT ESTATE - D.B. 165, Pg. 120



MADISON DISTRICT

SECTION 55A
INSERT 55A

REVISED: 12-90 95 02 03 05

PREPARED BY VIRGINIA STATE DEPARTMENT OF TAXATION, DIVISION OF REAL ESTATE APPRAISAL AND MAPPING